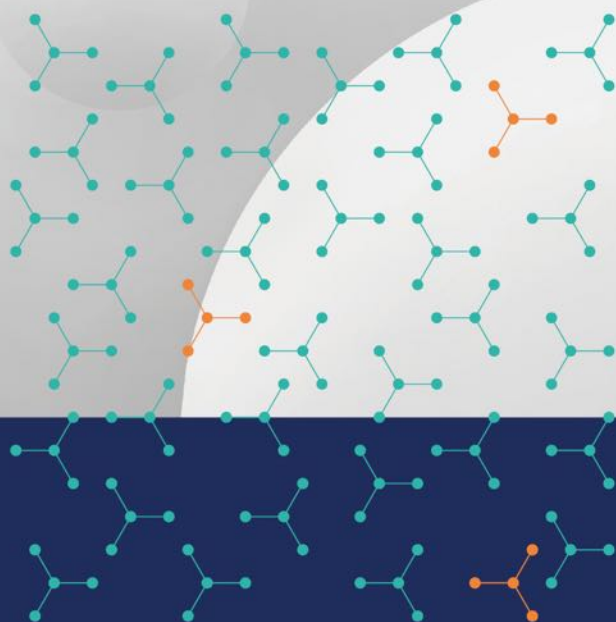




# **BIOEAST** **PRODUCT CATALOGUE**



Serve Science See the Future



## COMPANY PROFILE

**Hangzhou Bioeast Biotech Co., Ltd.** (hereinafter referred to as Bioeast Biotech) is a leading high-tech enterprise dedicated to pioneering research and development in the field of key raw materials for In-Vitro Diagnostic, Life Science, and Biomedical reagent solutions. Established in 2018, Bioeast Biotech has emerged as a trusted provider of innovative solutions in the industry.

We specialize in developing advanced technologies and cutting-edge solutions to meet the evolving needs of the diagnostic, life science, and biomedical sectors.

Our product portfolio encompasses a wide range of offerings, including **microspheres, antigens, antibodies, enzymes, active proteins, chromatographic products**, and integrated solutions for various diagnostic platforms such as **Biochemistry, CLIA, Elisa, Lateral Flow, Fluoroimmunoassay, Immunoturbidimetric**, and **Molecular Diagnostics**.

With our leading R&D and manufacturing facilities, **ISO13485** certified quality system, and round-the-clock technical support with assay development experience;

We have proudly served hundreds of manufacturers with customized solutions that meet their specific needs. As your trusted partner along the way of life science, we are committed to creating a glorious future together. Let's collaborate to achieve breakthroughs and drive innovation in the industry.

**aichek**

POCT Solution

**Acnovia**  
BIOSYSTEMS

mRNA & Cell Therapy Solution

**百奥吉**  
BIOGENMICRO

Biomedicine Raw Material Solution

*\*3 wholly-owned companies will be launched to global market soon to serve manufacturers for different needs.*

# CATALOGUE

04

## MICROSPHERES

Microspheres	05
PolyMicrospheres	05
Colored microspheres	05
Fluorescent microspheres	06
Nucleic acid extraction magnetic beads	06

07

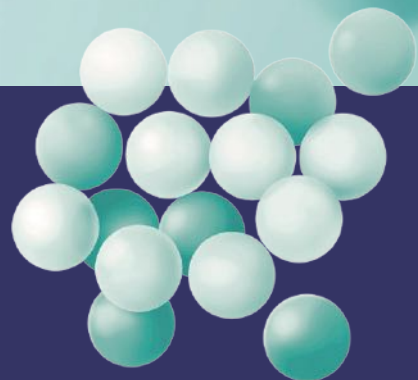
## ANTIGENS AND ANTIBODIES

CARDIAC SERIES	08
THROMBUS SERIES	09
INFLAMMATION SERIES	09
BONE METABOLISM SERIES	10
FERTILITY SERIES	10
KIDNEY FUNCTION SERIES	11
GLYCO METABOLISM SERIES	11
HYPERTENSION SERIES	11
THYROID FUNCTION TRACT SERIES	11
TUMOR MARKER SERIES	11
GASTROINTESTINAL SERIES	12
ANEMIA SERIES	12
BLOOD LIPIDS SERIES	12
PULMONARY FUNCTION SERIES	13
LIVER FUNCTION SERIES	13
RESPIRATORY SERIES	14
INFECTIOUS DISEASES SERIES	14
SPECIFIC PROTEIN SERIES	14
SECONDARY ANTIBODY SERIES	14
NEURODEGENERATIVE DISEASE SERIES	15
HORMONE SERIES	15
DRUG OF ABUSE SERIES	15
OTHERS	17

18

## ENZYMES AND ACTIVE PROTEINS

# MICROSPHERES



# MICROSPHERES



Product Name	Cat No.	Surface Group	Size	Concentration	Application Platform
<b>MICROSPHERES</b>					
Bioeast Mag-COOH	M1000C	Carboxyl Group(COOH)	1200nm	50mg/ml	CLIA
	M2800C	Carboxyl Group(COOH)	2800nm	50mg/ml	CLIA
Bioeast Mag-Tosyl	M1000T	Tosyl(Tosyl)	1200nm	50mg/ml	CLIA
	M2800T	Tosyl(Tosyl)	2800nm	50mg/ml	CLIA
Bioeast Mag-NH2	M1000N	Amino Group(NH2)	1200nm	50mg/ml	CLIA
	M2800N	Amino Group(NH2)	2800nm	50mg/ml	CLIA
Bioeast Mag-SA	M1000S	Streptavidin(SA)	1200nm	10mg/ml	CLIA, Molecular Diagnostics
	M2800S	Streptavidin(SA)	2800nm	10mg/ml	CLIA, Molecular Diagnostics
	M1000TS	Streptavidin(SA)	1200nm	10mg/ml	CLIA, Molecular Diagnostics
	M2800TS	Streptavidin(SA)	2800nm	10mg/ml	CLIA, Molecular Diagnostics
<b>POLY MICROSPHERES</b>					
Poly Microspheres - CooH	P0080CA	Carboxyl Group(COOH)	80nm	10%	PETIA
	P0100C	Carboxyl Group(COOH)	100nm	10%	PETIA
	P0120C	Carboxyl Group(COOH)	120nm	10%	PETIA
	P0140C	Carboxyl Group(COOH)	140nm	10%	PETIA
	P0160C	Carboxyl Group(COOH)	160nm	10%	PETIA
	P0180C	Carboxyl Group(COOH)	180nm	10%	PETIA
	P0200C	Carboxyl Group(COOH)	200nm	10%	PETIA
	P0250C	Carboxyl Group(COOH)	250nm	10%	PETIA
	P0300C	Carboxyl Group(COOH)	300nm	10%	PETIA
	P0350C	Carboxyl Group(COOH)	350nm	10%	PETIA
<b>COLORED MICROSPHERES</b>					
Red Polystyrene	DR0200C	Carboxyl Group(COOH)	200nm	4%	LF
	DR0300C	Carboxyl Group(COOH)	300nm	4%	LF
	DR0400C	Carboxyl Group(COOH)	400nm	4%	LF
	DR0200S	Streptavidin(SA)	200nm	1%	LF
	DR0300S	Streptavidin(SA)	300nm	1%	LF
	DR0400S	Streptavidin(SA)	400nm	1%	LF

# MICROSPHERES



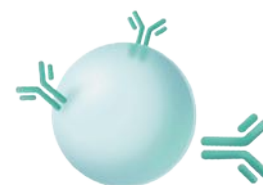
Product Name	Cat No.	Surface Group	Size	Concentration	Application Platform
<b>COLORED MICROSPHERES</b>					
Blue Polystyrene	DB0200C	Carboxyl Group(COOH)	200nm	4%	LF
	DB0300C	Carboxyl Group(COOH)	300nm	4%	LF
	DB0400C	Carboxyl Group(COOH)	400nm	4%	LF
	DB0200S	Streptavidin(SA)	200nm	1%	LF
	DB0300S	Streptavidin(SA)	300nm	1%	LF
	DB0400S	Streptavidin(SA)	400nm	1%	LF
Black Polystyrene	DK0200C	Carboxyl Group(COOH)	200nm	4%	LF
	DK0300C	Carboxyl Group(COOH)	300nm	4%	LF
	DK0400C	Carboxyl Group(COOH)	400nm	4%	LF
	DK0200S	Streptavidin(SA)	200nm	1%	LF
	DK0300S	Streptavidin(SA)	300nm	1%	LF
	DK0400S	Streptavidin(SA)	400nm	1%	LF
<b>FLUORESCENT MICROSPHERES</b>					
Europium Chelated Polystyrene Microspheres (pink)	EU0100C	Carboxyl Group(COOH)	100nm	1%	FIA
	EU0200C	Carboxyl Group(COOH)	200nm	1%	FIA
	EU0300C	Carboxyl Group(COOH)	300nm	1%	FIA
	EU0100S	Streptavidin(SA)	100nm	1%	FIA
	EU0200S	Streptavidin(SA)	200nm	1%	FIA
	EU0300S	Streptavidin(SA)	300nm	1%	FIA
Green Fluorescent Microspheres	FG0200C	Carboxyl Group(COOH)	200nm	1%	FIA
	FG0300C	Carboxyl Group(COOH)	300nm	1%	FIA
	FG0400C	Carboxyl Group(COOH)	400nm	1%	FIA
	FG0200S	Streptavidin(SA)	200nm	1%	FIA
	FG0300S	Streptavidin(SA)	300nm	1%	FIA
	FG0400S	Streptavidin(SA)	400nm	1%	FIA
<b>NUCLEIC ACID EXTRACTION MAGNETIC BEADS</b>					
Hydroxy SiO <sub>2</sub> Magnetic Beads	MS0200HA	Hydroxy(OH)	200nm	5.0%	Nucleic Acid Extraction
	MS0400HA	Hydroxy(OH)	400nm	5.0%	Nucleic Acid Extraction
	MS0400HB	Hydroxy(OH)	400nm	5.0%	Nucleic Acid Extraction



# ANTIGENS & ANTIBODIES



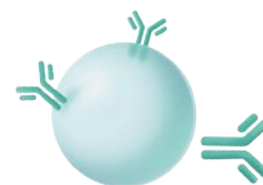
# ANTIGENS & ANTIBODIES



Product Name	Abbr.	Cat No.	Type	Application Platform	Pair Recommendation
<b>CARDIAC SERIES</b>					
Cardiac Troponin I	cTnI	cTnI101	Antibody	LF, CLIA, EIA	Coating
		cTnI102	Antibody	LF, CLIA, EIA	Conjugate
		cTnI103	Antibody	LF, CLIA, EIA	Coating
		cTnI104	Antibody	LF, CLIA, EIA	Conjugate
		cTnI105	Antibody	LF, CLIA, EIA	Coating
		cTnI106	Antibody	LF, CLIA, EIA	Coating
		cTnI301	Antigen	LF, CLIA, EIA	Control
Cardiac Troponin I-Cardiac Troponin C	cTnI-TnC	cTnI-TnC311	Antigen	LF, CLIA, EIA	Control
Cardiac Troponin T	cTnT	cTnT101	Antibody	LF, CLIA, EIA	Coating
		cTnT102	Antibody	LF, CLIA, EIA	Conjugate
Heart Fatty Acid Binding Protein	H-FABP	H-FABP101	Antibody	LF, CLIA, EIA	Coating
		H-FABP102	Antibody	LF, CLIA, EIA	Conjugate
		H-FABP103	Antibody	LF, CLIA, EIA	Coating
		H-FABP301	Antigen	LF, CLIA, EIA	Control
NT-proB-type Natriuretic Peptide	NT-proBNP	NT-proBNP101	Antibody	LF, CLIA, EIA	Coating
		NT-proBNP102	Antibody	LF, CLIA, EIA	Conjugate
		NT-proBNP103	Antibody	LF, CLIA, EIA	Conjugate
		NT-proBNP301	Antigen	LF, CLIA, EIA	Control
		NT-proBNP302	Antigen	LF, CLIA, EIA	Control
B-type Natriuretic Peptide	BNP	BNP103	Antibody	LF, CLIA, EIA	Coating
		BNP105	Antibody	LF, CLIA, EIA	Conjugate
		proBNP302	Antigen	LF, CLIA, EIA	Control
Myoglobin	MYO	MYO101	Antibody	LF, CLIA, EIA	Coating
		MYO102	Antibody	LF, CLIA, EIA	Conjugate
		MYO303	Antigen	LF, CLIA, EIA	Control
Creatine kinase MB	CK-MB	CKMB101	Antibody	LF, CLIA, EIA	Coating
		CKMB102	Antibody	LF, CLIA, EIA	Conjugate
		CKMB311	Antigen	LF, CLIA, EIA	Control
Suppression of Tumorigenicity 2	ST2	ST2101	Antibody	LF, CLIA, EIA	Coating
		ST2102	Antibody	LF, CLIA, EIA	Conjugate
		ST2103	Antibody	LF, CLIA, EIA	Coating
		ST2302	Antigen	LF, CLIA, EIA	Control
<b>THROMBUS SERIES</b>					
Fibrinogen Degradation Products	FDP	FDP101	Antibody	LF, CLIA, EIA	Coating
		FDP102	Antibody	LF, CLIA, EIA	Conjugate

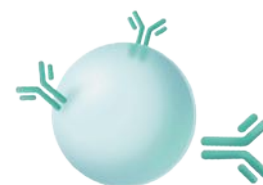


# ANTIGENS & ANTIBODIES



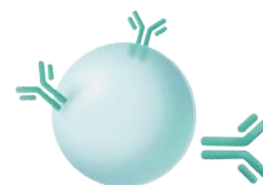
Product Name	Abbr.	Cat No.	Type	Application Platform	Pair Recommendation
<b>THROMBUS SERIES</b>					
D-Dimer	D-D	D-D101	Antibody	LF, CLIA, EIA	Coating
		D-D102	Antibody	LF, CLIA, EIA	Conjugate
		D-D303	Antigen	LF, CLIA, EIA	Control
Thrombomodulin	TM	TM101	Antibody	LF, CLIA, EIA	Coating
		TM102	Antibody	LF, CLIA, EIA	Conjugate
Thrombin-Antithrombin Complex	TAT	TAT101	Antibody	LF, CLIA, EIA	Coating
		TAT102	Antibody	LF, CLIA, EIA	Conjugate
<b>INFLAMMATION SERIES</b>					
C Reactive Protein	CRP	CRP101	Antibody	LF, CLIA	Conjugate
		CRP102	Antibody	LF, CLIA	Coating
		CRP103	Antibody	LF, CLIA	Coating
		CRP105	Antibody	PETIA	Coating
		CRP302	Antigen	LF, CLIA, EIA	Control
		CRP313	Antigen	LF, CLIA, EIA	Control
Procalcitonin	PCT	PCT101	Antibody	LF, CLIA, EIA	Coating
		PCT102	Antibody	LF, CLIA, EIA	Conjugate
		PCT106	Antibody	LF, CLIA, EIA	Conjugate
		PCT301	Antigen	LF, CLIA, EIA	Control
Serum Amyloid A Protein	SAA	SAA104	Antibody	LF, CLIA, EIA	Coating
		SAA105	Antibody	LF, CLIA, EIA	Conjugate
		SAA301	Antigen	LF, CLIA, EIA	Control
		SAA303	Antigen	LF, CLIA, EIA	Control
Interleukin - 6	IL-6	IL-6101	Antibody	LF, CLIA, EIA	Coating
		IL-6102	Antibody	LF, CLIA, EIA	Conjugate
		IL-6103	Antibody	LF, CLIA, EIA	Coating
		IL-6104	Antibody	LF, CLIA, EIA	Conjugate
		IL-6302	Antigen	LF, CLIA, EIA	Control
Heparin-Binding Protein	HBP	HBP101	Antibody	LF, CLIA, EIA	Coating
		HBP102	Antibody	LF, CLIA, EIA	Conjugate
		HBP302	Antigen	LF, CLIA, EIA	Control
		HBP312	Antigen	LF, CLIA, EIA	Control
<b>BONE METABOLISM SERIES</b>					
25-hydroxy Vitamin D	25-OH VD	25-OHVD101	Antibody	LF, CLIA, EIA	Coating/Conjugate
		25-OHVD102	Antibody	LF, CLIA, EIA	Conjugate
		25-OHVD421	Antigen	LF, CLIA, EIA	Conjugate/Coating

# ANTIGENS & ANTIBODIES



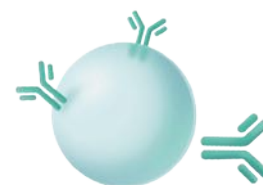
Product Name	Abbr.	Cat No.	Type	Application Platform	Pair Recommendation
<b>BONE METABOLISM SERIES</b>					
25-OH VD Assay Diluent	25-OH VD	25-OHVD501	Buffer	LF, CLIA, EIA	Dissociation
		25-OHVD502	Buffer	LF, CLIA, EIA	Dissociation
		25-OHVD503	Buffer	LF, CLIA, EIA	Dissociation
<b>FERTILITY SERIES</b>					
Human Chorionic Gonadotropin	HCG	HCG103	Antibody	LF, CLIA, EIA	Coating
		HCG104	Antibody	LF, CLIA, EIA	Conjugate
Luteinizing Hormone	LH	LH101	Antibody	LF, CLIA, EIA	Coating
		LH102	Antibody	LF, CLIA, EIA	Conjugate
Follicle-Stimulating Hormone	FSH	FSH101	Antibody	LF, CLIA, EIA	Coating
		FSH102	Antibody	LF, CLIA, EIA	Conjugate
Total $\beta$ -Human Chorionic Gonadotropin	TB-HCG	TB-HCG101	Antibody	LF, CLIA, EIA	Coating
		TB-HCG102	Antibody	LF, CLIA, EIA	Conjugate
Free $\beta$ -Human Chorionic Gonadotropin	FB-HCG	FB-HCG101	Antibody	LF, CLIA, EIA	Coating
		FB-HCG102	Antibody	LF, CLIA, EIA	Coating
		FB-HCG103	Antibody	LF, CLIA, EIA	Conjugate
Prolactin	PRL	PRL101	Antibody	LF, CLIA, EIA	Coating
		PRL102	Antibody	LF, CLIA, EIA	Conjugate
		PRL302	Antigen	LF, CLIA, EIA	Control
Anti-Mullerian Hormone	AMH	AMH101	Antibody	LF, CLIA, EIA	Coating
		AMH103	Antibody	LF, CLIA, EIA	Coating
		AMH104	Antibody	LF, CLIA, EIA	Conjugate
		AMH106	Antibody	LF, CLIA, EIA	Conjugate
		AMH302	Antigen	LF, CLIA, EIA	Control
Progesterone	Prog	Prog101	Antibody	LF, CLIA, EIA	Conjugate
		Prog401	Antigen	LF, CLIA, EIA	Coating
		Prog402	Antigen	LF, CLIA, EIA	Coating
Testosterone	Testo	Testo101	Antibody	LF, CLIA, EIA	Conjugate
		Testo403	Antigen	LF, CLIA, EIA	Coating/Conjugate
		Testo423	Antigen	LF, CLIA, EIA	Coating/Conjugate
Estradiol	E2	E2101	Antibody	LF, CLIA, EIA	Conjugate
		E2401	Antigen	LF, CLIA, EIA	Coating
Estriol	E3	E3101	Antibody	LF, CLIA, EIA	Conjugate
		E3401	Antigen	LF, CLIA, EIA	Coating/Conjugate
		E3421	Antigen	LF, CLIA, EIA	Coating/Conjugate
Androstenedione	ASD	ASD101	Antibody	LF, CLIA, EIA	Conjugate
		ASD401	Antigen	LF, CLIA, EIA	Coating/Conjugate
		ASD402	Antigen	LF, CLIA, EIA	Coating/Conjugate

# ANTIGENS & ANTIBODIES



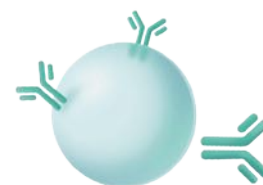
Product Name	Abbr.	Cat No.	Type	Application Platform	Pair Recommendation
<b>FERTILITY SERIES</b>					
17-Hydroxyprogesterone	17-OHP	17-OHP101	Antibody	LF, CLIA, EIA	Conjugate/Coating
		17-OHP401	Antigen	LF, CLIA, EIA	Coating/Conjugate
		17-OHP421	Antigen	LF, CLIA, EIA	Coating/Conjugate
<b>KIDNEY FUNCTION SERIES</b>					
Urinary Microalbumin	MAU	MAU101	Antibody	LF, CLIA, EIA	Coating
		MAU201	Antibody	PETIA	Coating
		MAU303	Antigen	LF, CLIA, EIA	Control
<b>GLYCO METABOLISM SERIES</b>					
Glycosylated Hemoglobin	HbA1c	HbA1c101	Antibody	LF, CLIA, EIA	Conjugate
		HbA1c102	Antibody	LF, CLIA, EIA	Coating
		HbA1c303	Antigen	LF, CLIA, EIA	Control
C-Peptide	C-P	C-P101	Antibody	LF, CLIA, EIA	Coating
		C-P102	Antibody	LF, CLIA, EIA	Conjugate
Insulin	INS	INS101	Antibody	LF, CLIA, EIA	Coating
		INS102	Antibody	LF, CLIA, EIA	Conjugate
<b>HYPERTENSION SERIES</b>					
Aldosterone	ALD	ALD201	Antibody	LF, CLIA, EIA	Conjugate/Coating
		ALD401	Antigen	LF, CLIA, EIA	Coating/Conjugate
Cortisol	COR	COR101	Antibody	LF, CLIA, EIA	Conjugate/Coating
		COR401	Antigen	LF, CLIA, EIA	Coating/Conjugate
		COR421	Antigen	LF, CLIA, EIA	Coating/Conjugate
<b>THYROID FUNCTION TRACT SERIES</b>					
Triiodothyronine	T3	T3101	Antibody	LF, CLIA, EIA	Conjugate/Coating
		T3421	Antigen	LF, CLIA, EIA	Coating/Conjugate
Thyroxine	T4	T4101	Antibody	LF, CLIA, EIA	Conjugate/Coating
		T4421	Antigen	LF, CLIA, EIA	Coating/Conjugate
TSH	TSH	TSH101	Antibody	LF, CLIA, EIA	Coating
		TSH102	Antibody	LF, CLIA, EIA	Conjugate
<b>TUMOR MARKER SERIES</b>					
Golgi protein 73	GP73	GP73101	Antibody	LF, CLIA, EIA	Conjugate
		GP73102	Antibody	LF, CLIA, EIA	Coating
		GP73103	Antibody	LF, CLIA, EIA	Coating
		GP73302	Antigen	LF, CLIA, EIA	Control
Alpha-Fetoprotein	AFP	AFP101	Antibody	LF, CLIA, EIA	Coating
		AFP102	Antibody	LF, CLIA, EIA	Conjugate
		AFP302	Antigen	LF, CLIA, EIA	Control

# ANTIGENS & ANTIBODIES



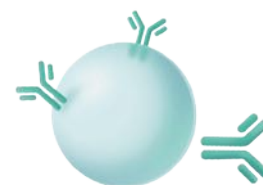
Product Name	Abbr.	Cat No.	Type	Application Platform	Pair Recommendation
<b>TUMOR MARKER SERIES</b>					
Carcinoembryonic Antigen	CEA	CEA101	Antibody	LF, CLIA, EIA	Coating
Carcinoembryonic Antigen	CEA	CEA102	Antibody	LF, CLIA, EIA	Conjugate
		CEA302	Antigen	LF, CLIA, EIA	Control
Total Prostate Specific Antigen	tPSA	tPSA101	Antibody	LF, CLIA, EIA	Coating
		tPSA102	Antibody	LF, CLIA, EIA	Conjugate
Neuron-specific enolase	NSE	NSE301	Antigen	LF, CLIA, EIA	Control
<b>GASTROINTESTINAL SERIES</b>					
Hemoglobin	Hb	Hb103	Antibody	LF, CLIA, EIA	Coating
Transferrin	TRF	TRF303	Antigen	LF, CLIA, EIA	Control
Helicobacter pylori	HP	HP101	Antibody	LF, CLIA, EIA	Conjugate
		HP102	Antibody	LF, CLIA, EIA	Coating
		HP105	Antibody	LF, CLIA, EIA	Coating
		HP106	Antibody	LF, CLIA, EIA	Conjugate
Gastrin-17	G-17	G-17101	Antibody	LF, CLIA, EIA	Coating
		G-17102	Antibody	LF, CLIA, EIA	Conjugate
		G-17103	Antibody	LF, CLIA, EIA	Conjugate
		G-17401	Antigen	LF, CLIA, EIA	Control
Pepsinogen I	PGI	PGI101	Antibody	LF, CLIA, EIA	Coating
		PGI102	Antibody	LF, CLIA, EIA	Conjugate
		PGI302	Antigen	LF, CLIA, EIA	Control
Pepsinogen II	PGII	PGII101	Antibody	LF, CLIA, EIA	Coating
		PGII102	Antibody	LF, CLIA, EIA	Conjugate
		PGII302	Antigen	LF, CLIA, EIA	Control
<b>ANEMIA SERIES</b>					
Ferritin	Fer	Fer103	Antibody	LF, CLIA, EIA	Coating
		Fer104	Antibody	LF, CLIA, EIA	Conjugate
Folic Acid	FA	FA201	Antibody	PETIA	Coating
		FA401	Antigen	LF, CLIA, EIA	Conjugate
		FA411	Antigen	LF, CLIA, EIA	Coating/Conjugate
		FA431	Antigen	LF, CLIA, EIA	Coating/Conjugate
Folic Acid Assay Diluent	FA	FA501	Buffer	LF, CLIA, EIA	Dissociation
		FA502	Buffer	LF, CLIA, EIA	Dissociation
Vitamin B12	VB12	VB12401	Antigen	LF, CLIA, EIA	Conjugate/Control
		VB12421	Antigen	LF, CLIA, EIA	Coating/Conjugate

# ANTIGENS & ANTIBODIES



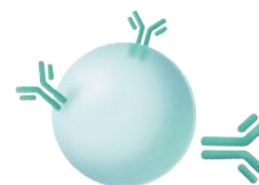
Product Name	Abbr.	Cat No.	Type	Application Platform	Pair Recommendation
<b>BLOOD LIPIDS SERIES</b>					
Apolipoprotein A1	ApoA1	ApoA1303	Antigen	PETIA	Control
Apoprotein B	ApoB	ApoB303	Antigen	PETIA	Control
Lipoprotein (a)	Lpa	Lpa303	Antigen	PETIA	Control
Apolipoprotein E	ApoE	ApoE303	Antigen	PETIA	Control
<b>PULMONARY FUNCTION SERIES</b>					
Krebs von den Lungen-6	KL-6	KL-6101	Antibody	LF, CLIA, EIA	Coating
		KL-6102	Antibody	LF, CLIA, EIA	Conjugate
<b>LIVER FUNCTION SERIES</b>					
Albumin	ALB	ALB303	Antigen	PETIA	Control
Prealbumin	PA	PA303	Antigen	PETIA	Control
<b>RESPIRATORY SERIES</b>					
Influenza A	FluA	FluA103	Antibody	LF, CLIA, EIA	Coating
		FluA104	Antibody	LF, CLIA, EIA	Conjugate
		FluA105	Antibody	LF, CLIA, EIA	Conjugate
		FluA106	Antibody	LF, CLIA, EIA	Coating
		FluA107	Antibody	LF, CLIA, EIA	Coating
		FluA108	Antibody	LF, CLIA, EIA	Conjugate
		FluA301	Antigen	LF, CLIA, EIA	Conjugate/Control
Influenza B	FluB	FluB101	Antibody	LF, CLIA, EIA	Coating
		FluB102	Antibody	LF, CLIA, EIA	Conjugate
		FluB105	Antibody	LF, CLIA, EIA	Coating
		FluB106	Antibody	LF, CLIA, EIA	Conjugate
		FluB301	Antigen	LF, CLIA, EIA	Conjugate/Control
SARS-CoV-2 N	SC2N	SC2N105	Antibody	LF, CLIA, EIA	Coating
		SC2N106	Antibody	LF, CLIA, EIA	Conjugate
		SC2N112	Antibody	LF, CLIA, EIA	Coating
		SC2N113	Antibody	LF, CLIA, EIA	Coating
		SC2N118	Antibody	LF, CLIA, EIA	Conjugate
		SC2N301	Antigen	LF, CLIA, EIA	Conjugate/Control
SARS-CoV-2 S1	SC2S1	SC2S1302	Antigen	LF, CLIA, EIA	Conjugate/Control
		SC2S1302S	Antigen	LF, CLIA, EIA	Conjugate/Control
SARS-CoV-2 ACE2	SC2ACE	SC2ACE2322	Antigen	LF, CLIA, EIA	Conjugate/Control
SARS-CoV-2 RBD	SC2RBD	SC2RBD332	Antigen	LF, CLIA, EIA	Conjugate/Control
Adenovirus	ADV	ADV101	Antibody	LF, CLIA, EIA	Coating
		ADV102	Antibody	LF, CLIA, EIA	Conjugate

# ANTIGENS & ANTIBODIES



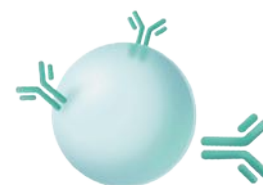
Product Name	Abbr.	Cat No.	Type	Application Platform	Pair Recommendation
<b>RESPIRATORY SERIES</b>					
Respiratory Syncytial Virus	RSV	RSV101	Antibody	LF, CLIA, EIA	Conjugate
		RSV102	Antibody	LF, CLIA, EIA	Coating
<b>INFECTIOUS DISEASES SERIES</b>					
Chlamydia	CHL	CHL101	Antibody	LF, CLIA, EIA	Coating
		CHL102	Antibody	LF, CLIA, EIA	Conjugate
Recombinant HIV-2 (gp37) Antigens	HIV-2	HIV-2311	Antigen	LF, CLIA, EIA	Coating
Salmonella Typhi Bacteria	TYP	TYP102	Antibody	LF, CLIA, EIA	Conjugate
Tuberculosis	TB	TB301	Antigen	LF, CLIA, EIA	Coating
<b>SPECIFIC PROTEIN SERIES</b>					
Human Immunoglobulin G	IgG	H-IgG303	Antigen	PETIA	Control
Human Immunoglobulin A	IgA	H-IgA303	Antigen	PETIA	Control
Human Immunoglobulin M	IgM	H-IgM303	Antigen	PETIA	Control
		H-IgM303s	Antigen	PETIA	Control
Human Complement Component 3	C3	C3303	Antigen	PETIA	Control
Human Complement Component 4	C4	C4303	Antigen	PETIA	Control
Mouse Immunoglobulin G	M-IgG	M-IgG313	Antigen	LF	Conjugate
Rabbit Immunoglobulin G	R-IgG	R-IgG313	Antigen	LF	Conjugate
Chicken Immunoglobulin Y	C-IgY	C-IgY303	Antigen	LF	Conjugate
Sheep Immunoglobulin G	S-IgG	S-IgG303	Antigen	LF	Conjugate
<b>SECONDARY ANTIBODY SERIES</b>					
Mouse Anti-Human IgG Monoclonal Antibody	H-IgG	H-IgG102	Antibody	LF, CLIA, EIA	Coating/Conjugate
Mouse Anti-Human IgM ( $\mu$ chain) Monoclonal Antibody	H-IgM	H-IgM101	Antibody	LF, CLIA, EIA	Coating/Conjugate
Mouse Anti-Human IgE Monoclonal Antibody	H-IgE	H-IgE101	Antibody	LF, CLIA, EIA	Coating/Conjugate
		H-IgE102	Antibody	LF, CLIA, EIA	Coating/Conjugate
Sheep Anti-Mouse IgG Polyclonal Antibody	M-IgG	M-IgG202	Antibody	LF, CLIA, EIA	Coating
Sheep Anti-Rabbit IgG Polyclonal Antibody	R-IgG	R-IgG202	Antibody	LF, CLIA, EIA	Coating
Rabbit Anti-Chicken IgY Polyclonal Antibody	C-IgY	C-IgY201	Antibody	LF, CLIA, EIA	Coating
Sheep Anti-Chicken IgY Polyclonal Antibody	C-IgY	C-IgY202	Antibody	LF, CLIA, EIA	Coating

# ANTIGENS & ANTIBODIES



Product Name	Abbr.	Cat No.	Type	Application Platform	Pair Recommendation
<b>NEURODEGENERATIVE DISEASE SERIES</b>					
Amyloid $\beta$ -protein 1-42	AB1-42	AB1-42101	Antibody	LF, CLIA, EIA	Coating
		AB1-42102	Antibody	LF, CLIA, EIA	Conjugate
		AB1-42401	Antigen	LF, CLIA, EIA	Control
Amyloid $\beta$ -protein 1-40	AB1-40	AB1-40101	Antibody	LF, CLIA, EIA	Coating
		AB1-40102	Antibody	LF, CLIA, EIA	Conjugate
		AB1-40401	Antigen	LF, CLIA, EIA	Control
Phosphorylated Tau	P-Tau	P-Tau101	Antibody	LF, CLIA, EIA	Coating
		P-Tau102	Antibody	LF, CLIA, EIA	Conjugate
<b>HORMONE SERIES</b>					
Insulin-like growth factor-binding protein-3	IGFBP-3	IGBP-3101	Antibody	LF, CLIA, EIA	Coating
		IGBP-3102	Antibody	LF, CLIA, EIA	Conjugate
<b>DRUG OF ABUSE SERIES</b>					
Amphetamine	AMP	AMP102	Antibody	LF	Conjugate
		AMP401	Antigen	LF	Coating
		AMP402	Antigen	LF	Coating
Barbiturates	BAR	BAR102	Antibody	LF	Conjugate
		BAR402	Antigen	LF	Coating
Buprenorphine	BUP	BUP102	Antibody	LF	Conjugate
		BUP402	Antigen	LF	Coating
Benzodiazepines	BZO	BZO102	Antibody	LF	Conjugate
		BZO402	Antigen	LF	Coating
Caffeine	CAF	CAF102	Antibody	LF	Conjugate
		CAF402	Antigen	LF	Coating
Cocaine	COC	COC101	Antibody	LF	Conjugate
		COC102	Antibody	LF	Conjugate
		COC401	Antigen	LF	Coating
		COC402	Antigen	LF	Coating
Cotinine	COT	COT102	Antibody	LF	Conjugate
		COT402	Antigen	LF	Coating
2-Ethylidene-1,5-dimethyl-3,3-diphenylpyrrolidine	EDDP	EDDP102	Antibody	LF	Conjugate
		EDDP402	Antigen	LF	Coating
Ethyl Glucuronide	ETG	ETG102	Antibody	LF	Conjugate
		ETG402	Antigen	LF	Coating

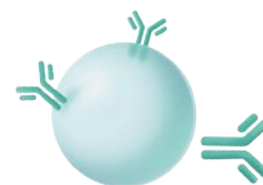
# ANTIGENS & ANTIBODIES



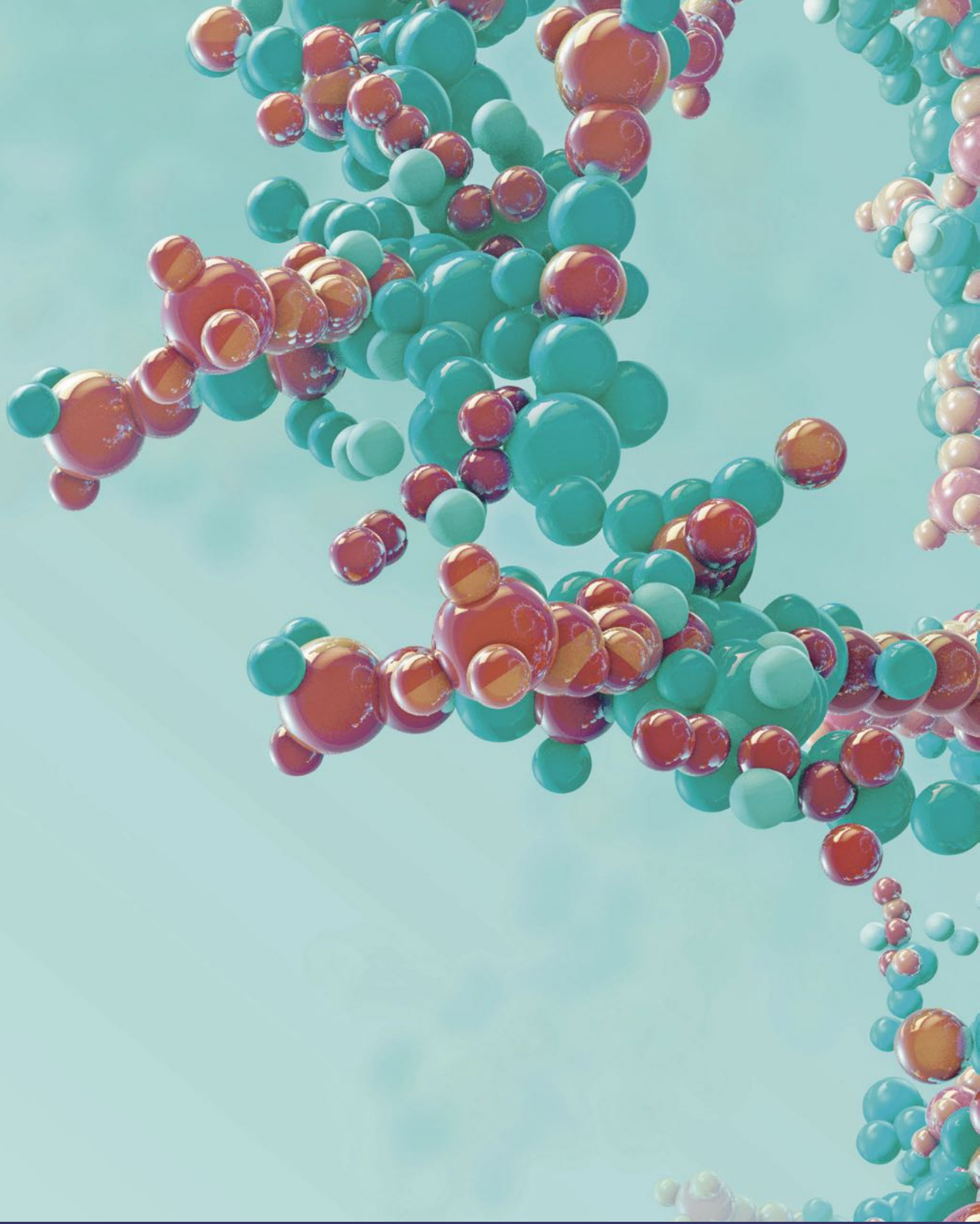
Product Name	Abbr.	Cat No.	Type	Application Platform	Pair Recommendation
<b>DRUG OF ABUSE SERIES</b>					
Fentanyl	FTY	FTY102	Antibody	LF	Conjugate
		FTY402	Antigen	LF	Coating
Norfentanyl	NFTY	NFTY102	Antibody	LF	Conjugate
Synthetic Cannabinoids	K2	K2101	Antibody	LF	Conjugate
		K2401	Antigen	LF	Coating
	K3	K3402	Antigen	LF	Coating
	K4	K4402	Antigen	LF	Coating
Ketamine	KET	KET101	Antibody	LF	Conjugate
		KET102	Antibody	LF	Conjugate
		KET401	Antigen	LF	Coating
		KET402	Antigen	LF	Coating
F-Ketamine	F-KET	F-KET102	Antibody	LF	Conjugate
		F-KET402	Antigen	LF	Coating
Methcathinone	MCAT	MCAT101	Antibody	LF	Conjugate
		MCAT401	Antigen	LF	Coating
		MCAT402	Antigen	LF	Coating
Methylenedioxymethamphetamine	MDMA	MDMA101	Antibody	LF	Conjugate
		MDMA102	Antibody	LF	Conjugate
		MDMA401	Antigen	LF	Coating
		MDMA402	Antigen	LF	Coating
Methamphetamine	MET	MET101	Antibody	LF	Conjugate
		MET102	Antibody	LF	Conjugate
		MET401	Antigen	LF	Coating
		MET402	Antigen	LF	Coating
Morphine	MOP	MOP102	Antibody	LF	Conjugate
		MOP401	Antigen	LF	Coating
		MOP402	Antigen	LF	Coating
Methaqualone	MQL	MQL102	Antibody	LF	Conjugate
		MQL402	Antigen	LF	Coating
Methadone	MTD	MTD102	Antibody	LF	Conjugate
		MTD401	Antigen	LF	Coating
		MTD402	Antigen	LF	Coating



# ANTIGENS & ANTIBODIES



Product Name	Abbr.	Cat No.	Type	Application Platform	Pair Recommendation
<b>DRUG OF ABUSE SERIES</b>					
Oxycodone	OXY	OXY102	Antibody	LF	Conjugate
		OXY402	Antigen	LF	Coating
Phencyclidine	PCP	PCP102	Antibody	LF	Conjugate
		PCP401	Antigen	LF	Coating
		PCP402	Antigen	LF	Coating
Propoxyphene	PPX	PPX102	Antibody	LF	Conjugate
		PPX402	Antigen	LF	Coating
Tricyclic Antidepressants	TCA	TCA102	Antibody	LF	Conjugate
		TCA402	Antigen	LF	Coating
Tetrahydrocannabinol	THC	THC102	Antibody	LF	Conjugate
		THC402	Antigen	LF	Coating
6-Monoacetylmorphine	6-MAM	6-MAM101	Antibody	LF	Conjugate
Tramadol	TRA	TRA101	Antibody	LF	Conjugate
		TRA102	Antibody	LF	Conjugate
		TRA402	Antigen	LF	Coating
Opium	OPI	OPI402	Antigen	LF	Coating
Xylazine	XYL	XYL102	Antibody	LF	Conjugate
		XYL402	Antigen	LF	Coating
Etomidate	ETO	ETO402	Antigen	LF	Coating
<b>OTHERS</b>					
Anti-RBC Monoclonal Antibody	RBC	RBC101	Antibody	LF	Coating
		RBC103	Antibody	LF	Coating
Heterophilic Blocking Reagent	HBR	HBR-1	HBR	LF, CLIA, EIA	/
		HBR-2	HBR	LF, CLIA, EIA	/
		HBR-3	HBR	LF, CLIA, EIA	/
		HBR-5	HBR	LF, CLIA, EIA	/
		HBR-6	HBR	LF, CLIA, EIA	/
		HBR-7	HBR	LF, CLIA, EIA	/
Streptavidin	SA	SA402	Antigen	LF	Coating
Biotin-BSA	Biotin	Biotin401	Antigen	LF	Coating
Anti - DNP	DNP	DNP201	Antibody	LF	Coating
DNP-BSA Independent C-line	DNP	DNP401	Antigen	LF	Gold-Conjugated
		DNP411	Antigen	LF	Gold-Conjugated



# ENZYMES & ACTIVE PROTEINS



# ENZYMES & ACTIVE PROTEINS




Product Series	Product Name	Cat No.	Type	Application Platform	Recommended Application
Tools Enzyme	SUMO Protease1	SUMO001	Enzyme	Isolation&Purification	Protein Purification
Active Protein	Streptavidin	SA001	Active Protein	CLIA, EIA	Coating/Conjugate/Coupling
		SA002	Active Protein	CLIA, EIA	Coating/Conjugate/Coupling
		SA008	Active Protein	CLIA, EIA	Coating/Conjugate/Coupling





## HANGZHOU BIOEAST BIOTECH CO., LTD.

 **Email:** [international@bioeast.com](mailto:international@bioeast.com)

 **Website:** [en.bioeast.com](http://en.bioeast.com)

 **Tel:** +86 190 1283 0538

 **Add:** 7F Building 3, Hexiang Technology Center Qiantang New Area, Hangzhou, Zhejiang Prov, China, 310018